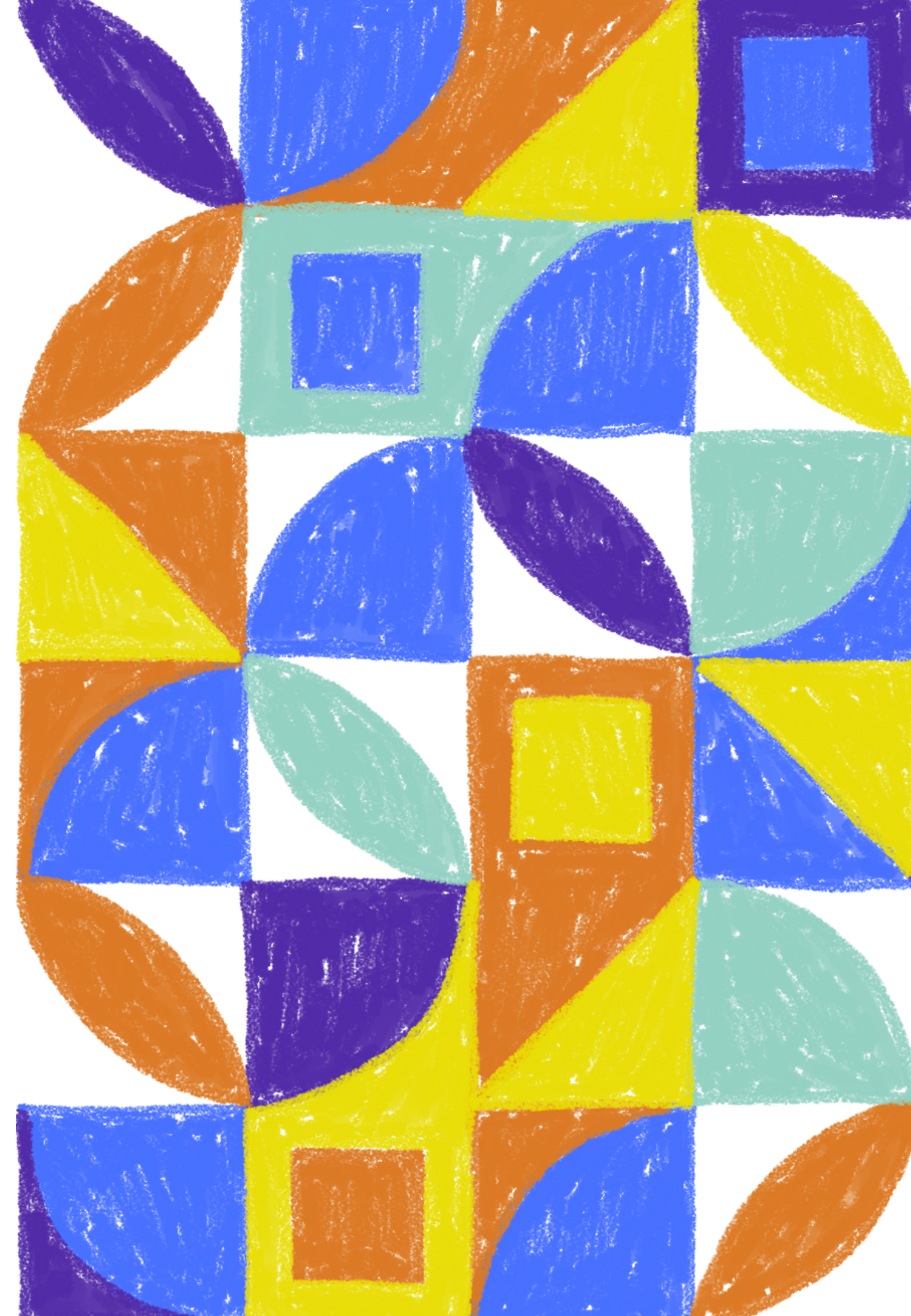




MUSICNL








## **Music Industry Association**

that fosters music community and industry growth through its advocacy, programming, and partnerships with members, industry leaders and stakeholders.



A decorative border on the left side of the slide, composed of various geometric shapes like circles, squares, and triangles in shades of blue, orange, yellow, and teal, arranged in a vertical column.

# PROGRAMS

- Artist Development (recording)
  - Market Access
  - Professional Development
- 
- A decorative border on the right side of the slide, composed of various geometric shapes like circles, squares, and triangles in shades of blue, orange, yellow, and teal, arranged in a vertical column.



A decorative border on the left side of the page, composed of various geometric shapes like circles, semi-circles, and triangles in shades of blue, teal, orange, and purple, arranged in a vertical column.


# Artist Development

funding for diverse artists and genres in singles, EP's, full-length sound recordings, marketing and promotion materials.


The program is broken down into a 3-tiers:

- \$2500
- \$5000
- \$10,000

## **Deadlines**

- July 30th, 2023 at 11:50pm NST.
  - November 30th, 2023 at 11:59pm NST.
- 
- A decorative border on the right side of the page, composed of various geometric shapes like circles, semi-circles, and triangles in shades of blue, teal, orange, and purple, arranged in a vertical column.





# Market Access

for touring inside and outside of the province to expand their market reach within and outside of Canada

## INTRA-PROVINCIAL


- \$500 Solo Artist
- \$750 Duo
- \$1,000 Group

## OUT OF THE PROVINCE

### Domestic Travel:

- \$1500 solo
- \$2000 duo
- \$2500 group

### International Travel:

- \$2500 solo
  - \$3250 duo
  - \$4000 group
- 





# Professional Development

for any training to gain creative skills, knowledge of the industry and attend (in person/virtual) conferences, festivals, and events.


## **Domestic Travel:**

- \$1500 individual
- \$2000 duo
- \$2500 group (3+)

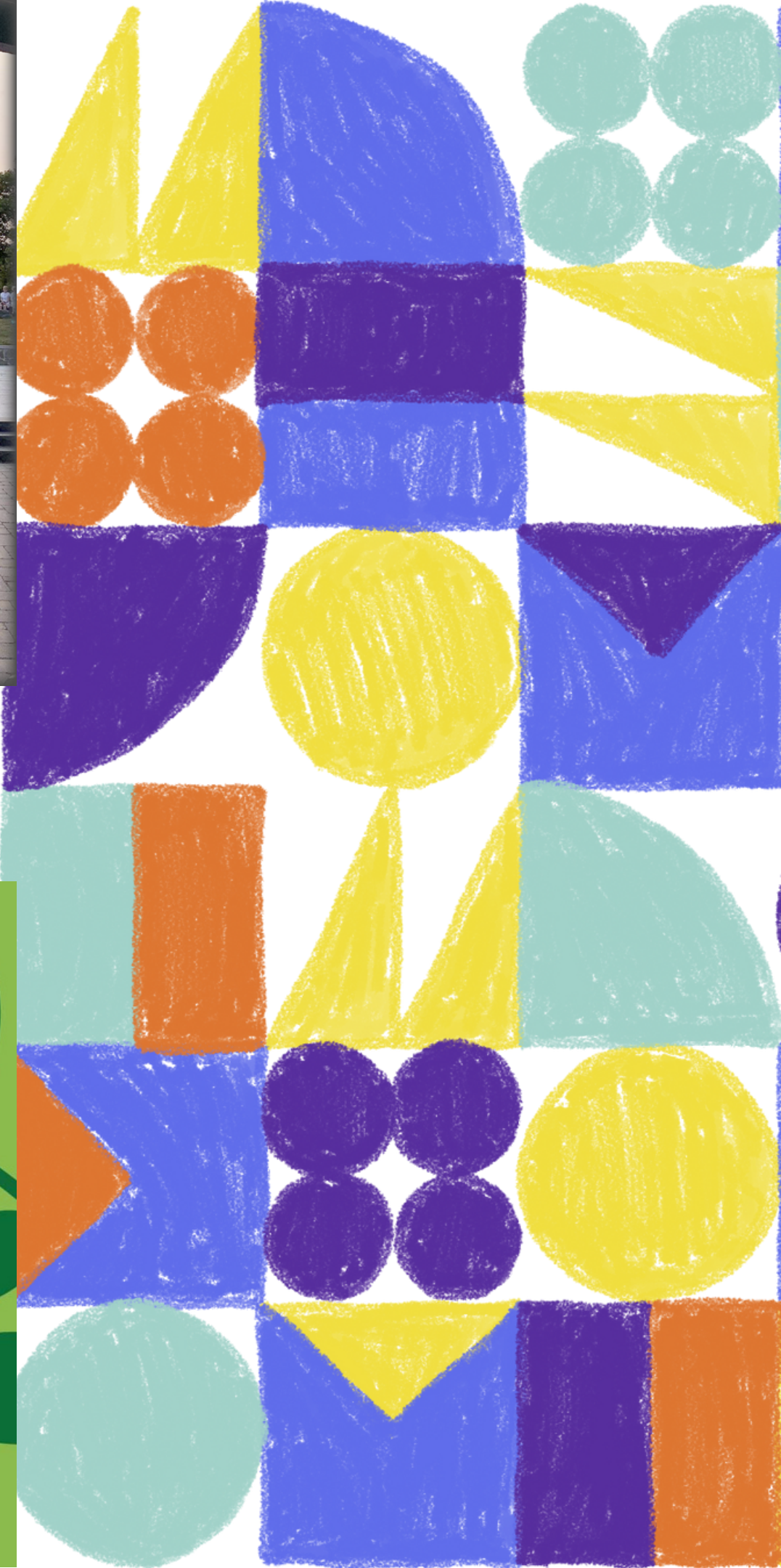
## **International Travel:**

- \$2500 individual
- \$3250 Duo
- \$4000 Group (3+)

## **VIRTUAL**

- Individuals & groups can apply for a maximum of \$750.
- 







The Battery Café



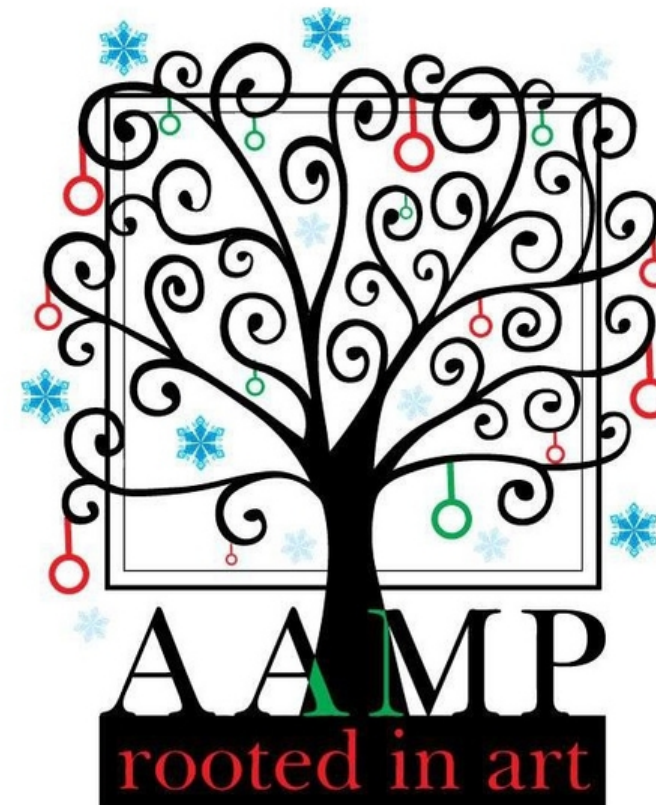
St. John's, Newfoundland



**LIST CAN BE FOUND HERE**

ST. JOHN'S

QUIDI VIDI BREWERY



BANNERMAN  
BREWING CO.



Thank you!

MUSICNL 